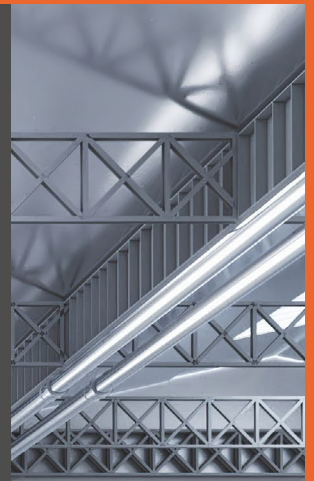


LeanTrack

RoundTrack systems
**The new entry-level
product for manual
transport systems**



STROTHMANN

Machines & Handling

LeanTrack: The entry-level product for the RoundTrack

LeanTrack is the new transport system for the RoundTrack. The standard cart is suitable for flexible use: from universal material transport to continuous assembly lines. Cost-effectiveness was prioritised during development of this system.

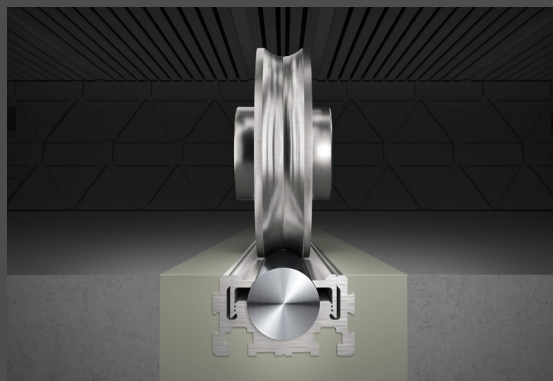
Great convenience, short delivery times

Just two LeanTrack carts make it easy for a single person to move up to 5 t of weight. Returning the cart at the end of the transport route is also simple: LeanTrack can be rolled back to the starting point on wheels like a trolley suitcase. Yet another highlight is the simple configuration and ordering process for the system via the web shop as well as the short delivery time.



Precise and reliable track guiding

The Strothmann RoundTrack is the basis for the highly precise and reliable cart track guiding function. The wheels ensure minimal rolling resistance while reliably guiding the system. This makes it possible to move even heavy loads with little energy input.



Easy transport

up to 5 t can be pushed
manually by a single person

Smart return

simple cart return thanks to trolley
principle

Simple handling

transport cart weight
as low as 18 kg

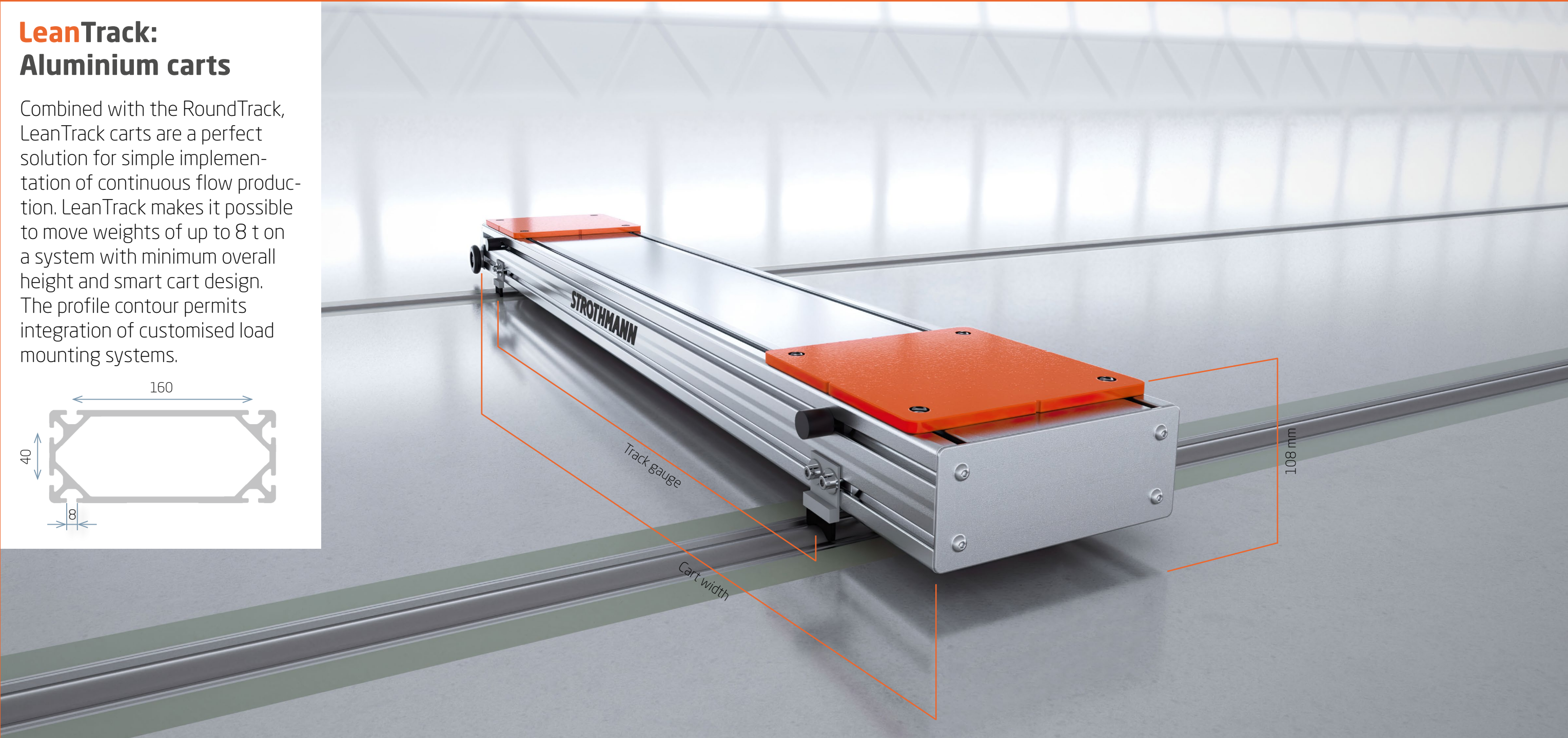
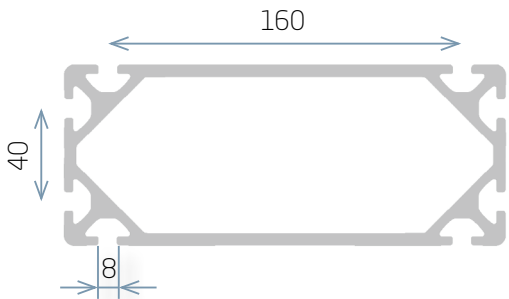
Fast implementation

simple configuration, quick
delivery and implementation



LeanTrack:
Aluminium carts

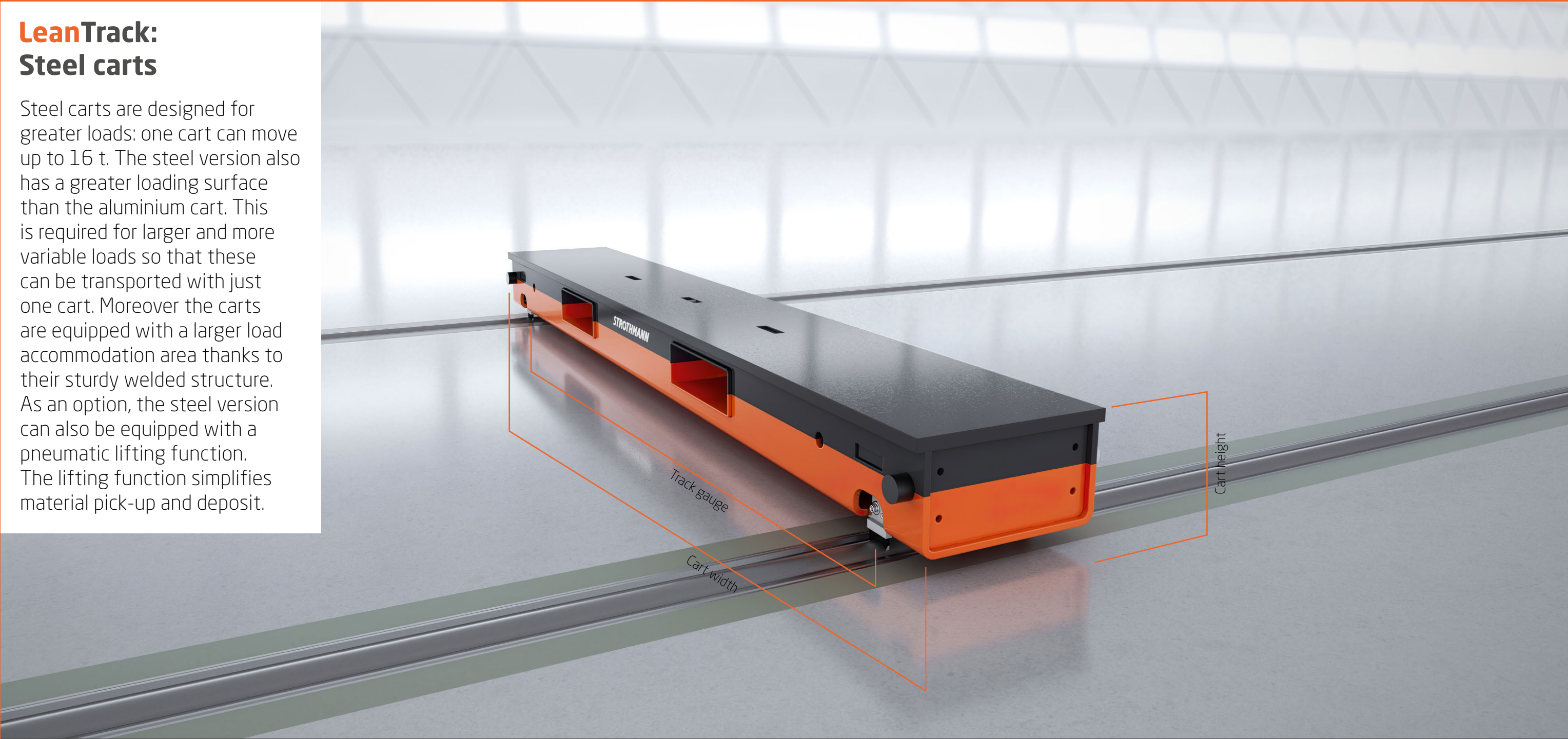
Combined with the RoundTrack, LeanTrack carts are a perfect solution for simple implementation of continuous flow production. LeanTrack makes it possible to move weights of up to 8 t on a system with minimum overall height and smart cart design. The profile contour permits integration of customised load mounting systems.



Applications	<ul style="list-style-type: none">Manual continuous flow production for heavy loads1 person can move loads of up to 5 tCombination with cycle drive and Movimax possible	Basic equipment	<ul style="list-style-type: none">Aluminium carrier profile with profile grooves for customised installation of attached components, wheels with axles, wiper brushes, lateral end plates, anti-slip bonded blanks as load application surfaces and to protect the cart surface, rubber/metal buffers
Max. load-bearing capacity	<ul style="list-style-type: none">up to 8 t per cart (assuming symmetric load distribution)	Separate accessories	<ul style="list-style-type: none">Rolli kit (side handle and rollers), foot-activated brake, base pin arrangement, transport handle on the long side, MoviMax adapter, special surface paint for the carrier profile
Approx. dimensions (without accessories)	<ul style="list-style-type: none">Cart length: 200 mmCart height: 100 mm (distance of top edge of cart from floor level) plus 8 mm bonded blanks as load application surfacesCart width: 500 to 4,000 mmTrack gauge: cart width - 250 mm <p>The customer selects the track gauge based on their products: The cart width is then calculated based on this value.</p>	Notes	<ul style="list-style-type: none">For loads >5 t per cart the load must be placed directly above the RoundTrack at the centre of the load application surfacesFor loads ≤5 t per cart the complete load application surface is availableIf you would like to transport multiple different products, additional tracks can be added for more load application surfaces on the cart. This would require individual consultation. <p>The load application surfaces are the orange surfaces in this image</p>
Approx. weight (without accessories)	<ul style="list-style-type: none">6.5 kg + 15 kg/m cart widthExample (track gauge 1000): 6.5 kg + 15 kg/m* 1.25 m = 25.25 kg	Approx. delivery	<ul style="list-style-type: none">6-8 weeks: purely delivery time – installation appointment to be coordinated

LeanTrack:
Steel carts

Steel carts are designed for greater loads: one cart can move up to 16 t. The steel version also has a greater loading surface than the aluminium cart. This is required for larger and more variable loads so that these can be transported with just one cart. Moreover the carts are equipped with a larger load accommodation area thanks to their sturdy welded structure. As an option, the steel version can also be equipped with a pneumatic lifting function. The lifting function simplifies material pick-up and deposit.

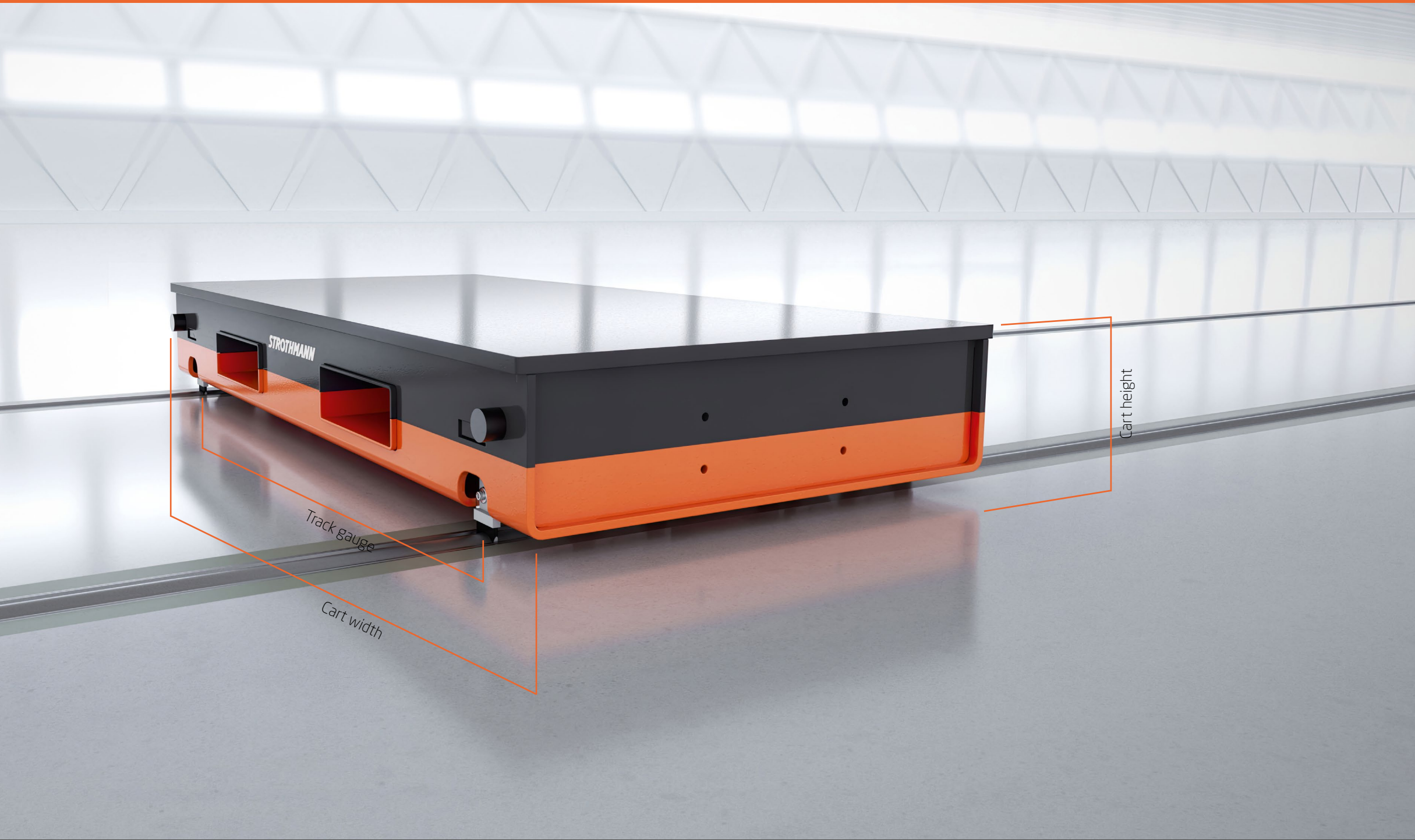


RoundTrack	RS25	RS40
Max. load-bearing capacity	<ul style="list-style-type: none">up to 8 t per cart (symmetric load distribution)	<ul style="list-style-type: none">up to 16 t per cart (symmetric load distribution)
Approx. standard dimensions (basic equipment)		
Cart length	<ul style="list-style-type: none">250 mm	<ul style="list-style-type: none">320 mm
Cart height	<ul style="list-style-type: none">150 mm	<ul style="list-style-type: none">180 mm
Cart width	<ul style="list-style-type: none">800 mm to 4.000 mm	<ul style="list-style-type: none">1.000 mm to 4.000 mm
Track gauge	<ul style="list-style-type: none">Cart width - 200 mmDifferent dimensions on request.	<ul style="list-style-type: none">Cart width - 200 mmDifferent dimensions on request.
Approx. weight (without accessories)	<ul style="list-style-type: none">80 to 285 kg	<ul style="list-style-type: none">150 to 520 kg

Basic equipment	<ul style="list-style-type: none">Robust welded structure, duo cassettes, wiper brushes, forklift pockets, thread for crane transport, rubber/metal buffers
Special equipment (on request)	<ul style="list-style-type: none">Hole patterns and mounting rails on the cover plate and machined mounting surfaces for fastening your products and accommodation on the cart.Cover plate lifting function with a stroke of approx. 30 mm (external 6 bar compressed air supply required)Open forklift pockets pointing down for pick-up by industrial truck
Separate accessories	<ul style="list-style-type: none">Foot-activated brake, base pin arrangement, MoviMax adapter
Notes	<ul style="list-style-type: none">For loads > 5 t per cart, the load must be placed with an offset of ±150 mm above the RoundTrack.Loads that have to be placed on the complete cover plate of the cart have to be coordinated individually on request.
Approx. delivery	<ul style="list-style-type: none">9-12 weeks: purely delivery time - installation appointment to be coordinated

LeanTrack:
Steel carts+

Steel carts are designed for greater loads: one cart can move up to 36 t. The steel version also has a greater loading surface than the aluminium cart. This is required for larger and more variable loads so that these can be transported with just one cart. Moreover the carts are equipped with a larger load accommodation area thanks to their sturdy welded structure. As an option, the steel version can also be equipped with a pneumatic lifting function. The lifting function simplifies material pick-up and deposit.

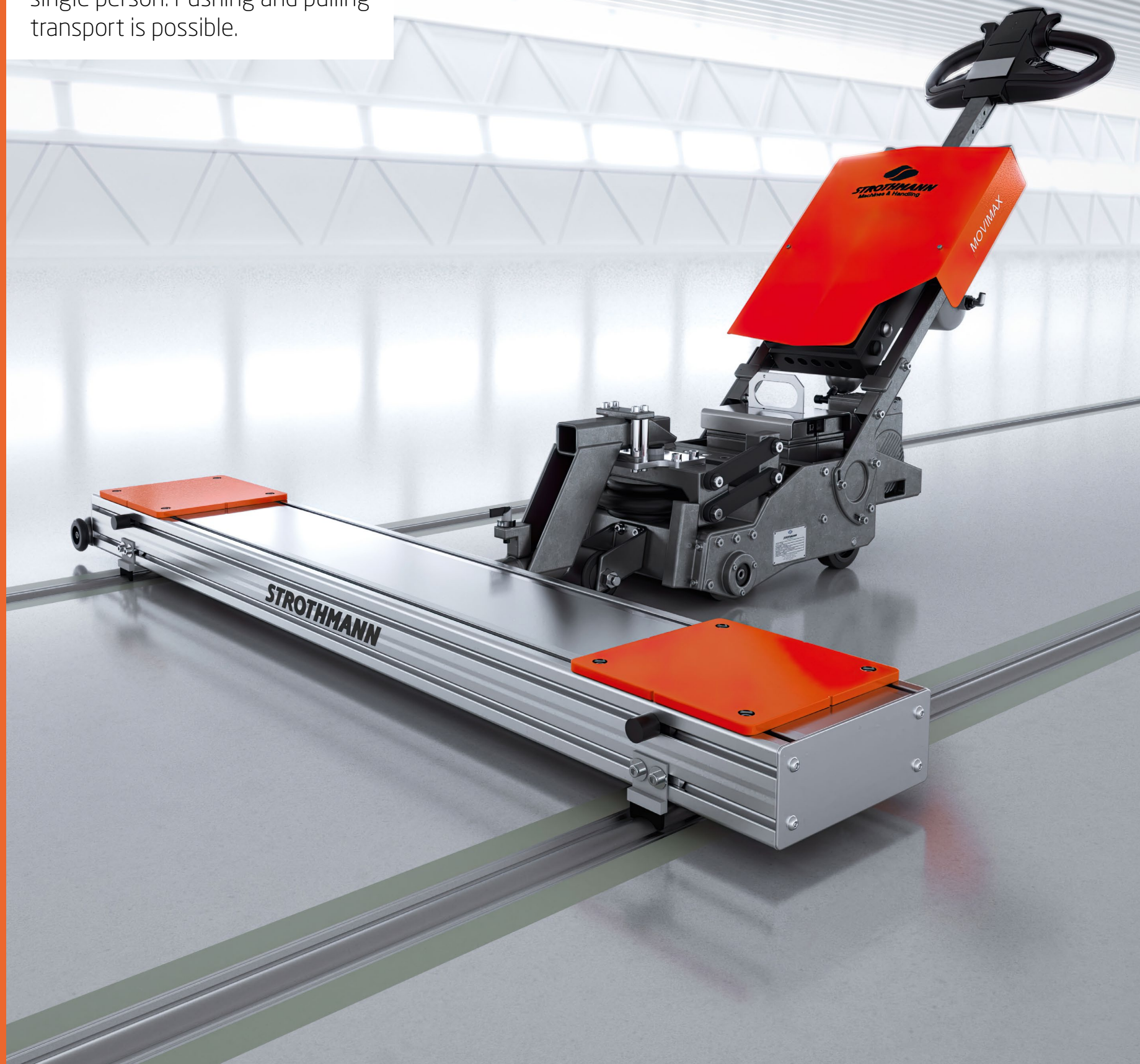


RoundTrack	RS25	RS40
Max. load-bearing capacity	<ul style="list-style-type: none">up to 16 t per cart (symmetric load distribution)	<ul style="list-style-type: none">up to 36 t per cart (symmetric load distribution)
Approx. standard dimensions (basic equipment)		
Cart length	<ul style="list-style-type: none">500 mm to 3.000 mm	<ul style="list-style-type: none">650 mm to 3.000 mm
Cart height	<ul style="list-style-type: none">150 mm	<ul style="list-style-type: none">180 mm
Cart width	<ul style="list-style-type: none">800 mm to 4.000 mm	<ul style="list-style-type: none">1.000 mm to 4.000 mm
Track gauge	<ul style="list-style-type: none">Cart width - 200 mmDifferent dimensions on request.	<ul style="list-style-type: none">Cart width - 200 mmDifferent dimensions on request..
Approx. weight (without accessories)	<ul style="list-style-type: none">Based on individual project	<ul style="list-style-type: none">Based on individual project

Basic equipment	<ul style="list-style-type: none">Robust welded structure, duo cassettes, wiper brushes, forklift pockets, thread for crane transport, rubber/metal buffers
Special equipment (on request)	<ul style="list-style-type: none">Hole patterns and mounting rails on the cover plate and machined mounting surfaces for fastening your products and accommodation on the cart.Cover plate lifting function with a stroke of approx. 30 mm (external 6 bar compressed air supply required)Open forklift pockets pointing down for pick-up by industrial truck
Separate accessories	<ul style="list-style-type: none">Foot-activated brake, base pin arrangement, MoviMax adapter
Notes	<ul style="list-style-type: none">For loads > 5 t per cart, the load must be placed with an offset of ± 150 mm above the RoundTrack.Loads that have to be placed on the complete cover plate of the cart have to be coordinated individually on request.
Approx. delivery	<ul style="list-style-type: none">9-12 weeks: purely delivery time - installation appointment to be coordinated

LeanTrack: Accessories

Mover MoviMax: For moving carts with a total weight of up to 25 t on the RoundTrack. Permits simple handling of heavy loads by a single person. Pushing and pulling transport is possible.



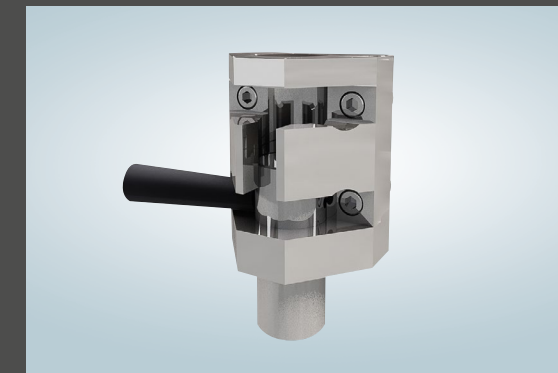
Handles for simple return transport

The handle is installed on the front of the LeanTrack cart and permits simple return transport when combined with the carrier wheels.



Carrier wheels for simple return transport

Together with a handle, the carrier wheels offer a simple option for returning the LeanTrack from the end of the route to its start. This transport is based on the trolley principle.



Base pin arrangement

For locking a cart in a fixed position. The pin is inserted in a floor sleeve.



Floor sleeve

Required for using the base pin arrangement installed on the cart. The floor sleeve is a complementary product for the base pin arrangement.



Foot-activated brake

For easy locking of an empty cart with your foot.



MoviMax adapter

This Mover connection is required for use of the battery-powered MoviMax.

You are looking for an affordable standard material transport cart?

You've found it! Contact our
RoundTrack experts:
+49 5207 9122 222
sales@strothmann.com

Configure your product and determine the price:
shop.strothmann.com

STROTHMANN Machines & Handling GmbH
Altenkamp 11
33758 Schloß Holte-Stukenbrock
Germany
Phone: +49 52 07 91 22-0
E-mail: info@strothmann.com

Information about the properties and application of products does not constitute a guarantee of properties, but is only intended for information purposes. The decisive factor for the scope of our delivery is the respective contract.
RoundTrack® and uTrack® are registered trademarks by Strothmann Machines & Handling GmbH. Other designations used in this publication may be trademarks whose use by third parties for their own purposes could violate the rights of the owners.

© Strothmann Machines & Handling GmbH 05/2022

